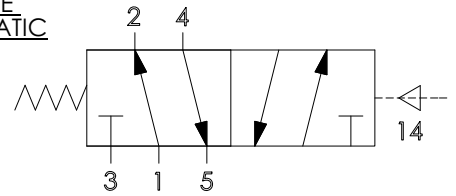
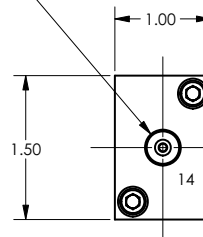


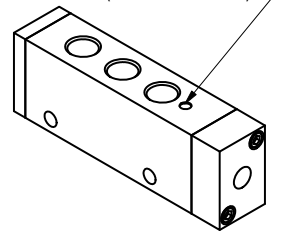
VALVE SCHEMATIC



ϕ 1/8-27 NPT CONTROL PORT



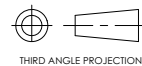
VENT (SINTERED BRONZE)



SPECIFICATIONS:

VALVE TYPE	PNEUMATIC, 4 WAY, 2 POSITION, AIR ACTUATED, SPOOL
NUMBER OF PORTS	5 (WORKING), 1 (CONTROL)
PORT SIZE	1/4"-18 NPT (WORKING), 1/8"-27 NPT (CONTROL)
VALVE OPERATOR	AIR PILOT, SPRING RETURN
MAX FLOW	43 SCFM @ 100 PSI
OPERATING RANGE	45-130 PSI
MIN ACTIVATION PRESSURE	45 PSI
LENGTH x WIDTH x HEIGHT	4.55 x 1.50 x .75

TYPE OF PROJECTION



DO NOT SCALE DRAWING
UNLESS OTHERWISE SPECIFIED
DIMENSIONS ARE IN INCHES
TOLERANCES ARE:
DECIMALS
X = \pm .03
XX = \pm .010
XXX = \pm .005
FRACTION = \pm .015
ANGLES = \pm 1/2°

PROPRIETARY AND CONFIDENTIAL

THE INFORMATION CONTAINED IN THIS DRAWING IS THE SOLE PROPERTY OF APSCO Inc.. ANY REPRODUCTION IN PART OR AS A WHOLE WITHOUT WRITTEN PERMISSION OF APSCO Inc. IS PROHIBITED.

SURFACE TEXTURE OR BETTER

MATERIAL

NA

FINISH

NA



TITLE: VX VALVE; 4-WAY, 2 POSITION AIR PILOT ACTUATED, SPRING RETURN

DWG. NO.		REV	
VX-4-AP		-	
SIZE	DRAWN	DATE	CLASS
B	GK	08/09/2014	VALVE
F/N-VX-4 SERIES, ACTUATED			SHT. 2 OF 2