



Chelsea[®] Power Take-Off

PTO General Information



ENGINEERING YOUR SUCCESS.



WARNING — User Responsibility

FAILURE OR IMPROPER SELECTION OR IMPROPER USE OF THE PRODUCTS DESCRIBED HEREIN OR RELATED ITEMS CAN CAUSE DEATH, PERSONAL INJURY AND PROPERTY DAMAGE.

This document and other information from Parker-Hannifin Corporation, its subsidiaries and authorized distributors provide product or system options for further investigation by users having technical expertise.

The user, through its own analysis and testing, is solely responsible for making the final selection of the system and components and assuring that all performance, endurance, maintenance, safety and warning requirements of the application are met. The user must analyze all aspects of the application, follow applicable industry standards, and follow the information concerning the product in the current product catalog and in any other materials provided from Parker or its subsidiaries or authorized distributors.

To the extent that Parker or its subsidiaries or authorized distributors provide component or system options based upon data or specifications provided by the user, the user is responsible for determining that such data and specifications are suitable and sufficient for all applications and reasonably foreseeable uses of the components or systems.

Offer of Sale

The items described in this document are hereby offered for sale by Parker Hannifin Corporation, its subsidiaries or its authorized distributors. This offer and its acceptance are governed by the provisions stated in the "Offer of Sale".

© Copyright 2018, Parker Hannifin Corporation, All Rights Reserved



Chelsea PTO Series Information

Six Bolt PTOs

Mechanical Shift

221	1
290	1
340	1
442	2
447	2
660	3
Options Chart	4-5

PowerShift

252 (Hydraulic)	6
272 (Hydraulic or Pneumatic)	6
272F (Ford Series - Hydraulic)	6
Options Chart	7-8

Eight Bolt PTOs

Mechanical Shift

348	9
489	9
680	9
823	10
863	10
880	10
Options Chart	11-12

PowerShift

282 (Hydraulic or Pneumatic)	13
852 (Hydraulic)	13
885 (Pneumatic)	13
Options Chart	14

Ten Bolt PTOs

Constant Mesh

267	15
287	15
877	15
897	16
899	16
Options Chart	17

PowerShift

280 - 3 & 5 Assembly (Hydraulic)	18
280 - 8 Assembly (Hydraulic)	18
870 (Hydraulic)	18
890 (Hydraulic)	19
892 (Hydraulic)	19
Options Chart	20

Continued on Next Page

IMPORTANT: This publication provides general information about our products. Please refer to the Application Catalog and Owner's Manuals for Installation Instructions and Safety Information. Information about our products can also be found on www.PHTruck.com and www.parker.com.

Chelsea PTO Series Information

Rear Mount PTOs

Mechanical Shift

511	21
523	21
541	21
Options Chart	22

PowerShift

590 (Hydraulic)	23
Options Chart	24

Ford PTOs

249 (Hydraulic)	25
249V (Hydraulic)	25
Options Chart	26

Front Mount PTOs

2442	27
Options Chart	28

Split Shaft Gear Box PTOs

901	29
912	29
Options Chart	30

Geared Adapter PTOs

626	31
628	31
630	31
645	32
Options Chart	32-33

Offer of Sale	35
---------------------	----



221 Series

- Low speed, heavy duty applications on both manual and automatic transmissions
- Available with both a standard housing or a special low-profile housing
- Pressure lube option
- Wide range of pump flanges
- Torque rating up to 250 lbs-ft

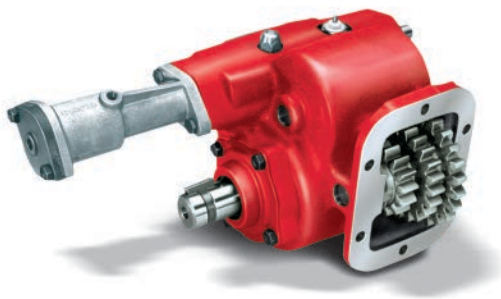
Specifications Chart	Approximate Weight: 30 lbs. [13.6 kg]	
	221*C	221*E
Intermittent Torque Rating lbs-ft [Nm]	250 [339]	250 [339]
HP Rating for Intermittent Service		
At 500 RPM of Output Shaft HP [Kw]	24 [18]	24 [18]
At 1000 RPM of Output Shaft HP [Kw]	48 [36]	48 [36]



290 Series

- Deep reach housing design eliminates the need for special adapters
- Torque ratings up to 175 lbs-ft
- Rotatable pump flanges for maximum clearance
- Fifteen (15) output options; four (4) speed ratios; seven (7) shift options

Specifications Chart	Approximate Weight: 37 lbs. [16.8 kg]		
	290*F	290*Q	290*U
Intermittent Torque Rating lbs-ft [Nm]	175 [237]	175 [237]	175 [237]
HP Rating for Intermittent Service			
At 500 RPM of Output Shaft HP [Kw]	17 [12]	17 [12]	17 [12]
At 1000 RPM of Output Shaft HP [Kw]	33 [25]	33 [25]	33 [25]



340 Series

- Low-speed forward and reverse
- Removable cover plate for adjusting backlash
- Shift options include air and lever
- Variety of input gears to cover most applications

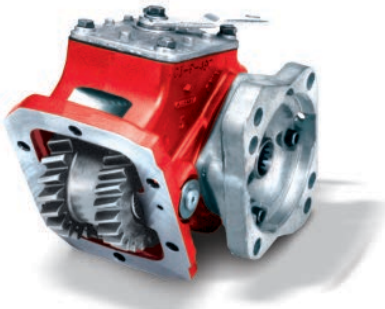
Specifications Chart	Approximate Weight: 32 lbs. [15 kg]
	340*F
Intermittent Torque Rating lbs-ft [Nm]	200 [271]
HP Rating for Intermittent Service	
At 500 RPM of Output Shaft HP [Kw]	19 [14]
At 1000 RPM of Output Shaft HP [Kw]	38 [28]



442 Series

- Engineered to work with virtually all existing transmission applications
- Economical workhorse features a cast iron housing
- Slip fit idler pin for easy serviceability
- Easy to set backlash

Specifications Chart	Approximate Weight: 28 lbs. [12.7 kg]											
	442 *A	442 *B	442 *C	442 *F	442 *H	442 *L	442 *Q	442 *R	442 *S	442 *U	442 *W	442 *X
Intermittent Torque Rating lbs-ft [Nm]	250 [339]	250 [339]	250 [339]	250 [339]	250 [339]	250 [339]	225 [305]	225 [305]	200 [271]	195 [264]	175 [237]	140 [190]
HP Rating for Intermittent Service												
At 500 RPM of Output Shaft HP [Kw]	24 [18]	24 [18]	24 [18]	24 [18]	24 [18]	24 [18]	21 [16]	21 [16]	19 [14]	19 [14]	17 [12]	13 [10]
At 1000 RPM of Output Shaft HP [Kw]	48 [36]	48 [36]	48 [36]	48 [36]	48 [36]	48 [36]	43 [32]	43 [32]	38 [28]	37 [28]	33 [25]	27 [20]



447 Series

- Eliminates adjacent gear interference inside transmission/PTO opening
- One-piece input gear
- Pressure lube option available
- No adapter plate required

Specifications Chart	Approximate Weight: 21 lbs. [9.5 kg]			
	447*Q	447*S	447*U	447*W
Intermittent Torque Rating lbs-ft [Nm]	225 [305]	200 [271]	195 [264]	175 [237]
HP Rating for Intermittent Service				
At 500 RPM of Output Shaft HP [Kw]	21 [16]	19 [14]	19 [14]	17 [12]
At 1000 RPM of Output Shaft HP [Kw]	43 [32]	38 [28]	38 [28]	33 [25]



660 Series

- Flexible design works with most popular transmission applications
- Deep mount housing option available for Mack applications
- Designed for higher torque applications such as pneumatic blowers
- Torque ratings up to 375 lbs-ft

Specifications Chart	Approximate Weight: 28.2 lbs. [12.8 kg]				
	660*F	660*H	660*Q	660*R	660*S
*Intermittent Torque Rating lbs-ft [Nm]	375 [508]	375 [508]	375 [508]	350 [475]	325 [441]
HP Rating for Intermittent Service					
At 500 RPM of Output Shaft HP [Kw]	36 [27]	36 [27]	36 [27]	33 [25]	31 [23]
At 1000 RPM of Output Shaft HP [Kw]	71 [53]	71 [53]	71 [53]	67 [50]	62 [46]
At 1500 RPM of Output Shaft HP [Kw]	107 [80]	107 [80]	107 [80]	100 [75]	93 [69]
*Above 1500 RPM: Call for Approval					

PTO Options Chart – Mechanical PTOs		221	290	340
Lubrication				
P	Pressure Lube	x		
X	No Pressure Lube	x	x	x
Shifting				
G	Air Shift (Opposite Output)			x
H	No Shift Assembly	x		
P	12V Elec/Air Shift	x	x	
C	Special Shift Control & Bracket Kit	x		
M	Constant Mesh	x		
A	Air Shift (Same Side as Output)			x
A	Air Shift	x	x	
S	Air Shift w/ PTO/Dump Pump Combo Valve w/ Kick Out w/ Neutral Spring Return	x	x	
T	Air Shift w/ PTO/Dump Pump Combo Valve w/o Kick Out w/ Neutral Spring Return	x	x	
U	Air Shift w/ PTO/Dump Pump Combo Valve w/ Kick Out w/o Neutral Spring Return	x	x	
V	Air Shift w/o Installation Kit	x	x	x
W	Wire Shift	x	x	
X	Wire Shift w/o Cable & Knob	x		
Y	Lever Shift			x
Output				
AK	SAE B 2-Bolt Flange, SAE B Shaft (7/8" - 13T)	x	x	
XE	SAE A 2 or 4-Bolt Flange, SAE A Shaft (5/8" - 9T)	x	x	
XK	SAE B 2 or 4-Bolt Flange, SAE B Shaft (7/8" - 13T)	x	x	
XQ**	SAE B 2 or 4-Bolt Flange, SAE B Shaft (7/8" - 13T)	x		
AF	SAE B 2 or 4-Bolt Flange, SAE BB Shaft (1" - 15T)	x	x	
AZ	SAE B 2 or 4-Bolt Flange, SAE C Shaft (1-1/4" - 14T)	x		
GA	Greaseable SAE B 2-Bolt Rotatable Flange, SAE B Shaft (7/8" - 13T)	x		
GB	Greaseable SAE B 4-Bolt Rotatable Flange, SAE B Shaft (7/8" - 13T)	x		
GK	Greaseable SAE B 2 or 4-Bolt Flange, SAE B Shaft (7/8" - 13T)	x		
GQ**	Greaseable SAE B 2 or 4-Bolt Flange, SAE B Shaft (7/8" - 13T)	x		
GF	Greaseable SAE B 2 or 4-Bolt Flange, SAE BB Shaft (1" - 15T)	x		
GR	Greaseable Chelsea Special (Cloverleaf), SAE B Shaft (7/8" - 13T)	x		
RC	Rotatable SAE A 2-Bolt Flange, SAE A Shaft (5/8" - 9T)	x	x	
RD	Rotatable SAE A 2-Bolt Flange, SAE B Shaft (7/8" - 13T)	x		
RA	Rotatable SAE B 2-Bolt Flange, SAE B Shaft (7/8" - 13T)	x	x	
RF	Rotatable SAE B 2-Bolt Flange, SAE BB Shaft (1" - 15T)	x	x	
RB	Rotatable SAE B 4-Bolt Flange, SAE B Shaft (7/8" - 13T)	x	x	
RE	Rotatable SAE B 4-Bolt Flange, SAE BB Shaft (1" - 15T)	x	x	
RK	Rotatable SAE B 2 or 4-Bolt Flange, SAE B Shaft (7/8" - 13T)	x	x	
XD	Rd Standard Shaft (1-1/4" - 5/16" Key)	x	x	x
XR	Chelsea Special (Cloverleaf), SAE B Shaft (7/8" - 13T)	x	x	
XX***	1-1/4" Tapered Output Shaft w/ Keyway	x	x	
XY	ISO 7653 Pump Mount DIN 5462 Shaft	x	x	

** XQ/GQ same as XK/GK except flange rotated 90°

*** Order companion (379824) separately

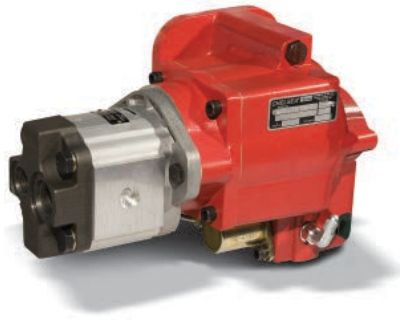
NOTE: Always check current price book for available options

PTO Options Chart – Mechanical PTOs		442	447	660
Lubrication				
P	Pressure Lube	x	x	x
X	No Pressure Lube	x	x	x
Shifting				
H	No Shift Assembly	x	x	x
P	12V Elec/Air Shift	x	x	x
C	Special Shift Control & Bracket Kit	x	x	x
M	Constant Mesh	x	x	x
A	Air Shift	x	x	x
S	Air Shift w/ PTO/Dump Pump Combo Valve w/ Kick Out w/ Neutral Spring Return	x	x	x
T	Air Shift w/ PTO/Dump Pump Combo Valve w/o Kick Out w/ Neutral Spring Return	x	x	x
U	Air Shift w/ PTO/Dump Pump Combo Valve w/ Kick Out w/o Neutral Spring Return	x	x	x
V	Air Shift w/o Installation Kit	x	x	x
W	Wire Shift	x	x	x
X	Wire Shift w/o Cable & Knob	x	x	x
D	Eaton Procision 12V Elec/Air	x		
E	Hydraulic Shift (Eaton Procision)	x		
Output				
AK	SAE B 2-Bolt Flange, SAE B Shaft (7/8" - 13T)	x	x	x
SQ	SAE B 4-Bolt Flange, SAE B Shaft (7/8" - 13T)	x		
XE	SAE A 2 or 4-Bolt Flange, SAE A Shaft (5/8" - 9T)	x	x	x
XK	SAE B 2 or 4-Bolt Flange, SAE B Shaft (7/8" - 13T)	x	x	x
XQ**	SAE B 2 or 4-Bolt Flange, SAE B Shaft (7/8" - 13T)	x	x	x
AF	SAE B 2 or 4-Bolt Flange, SAE BB Shaft (1" - 15T)	x	x	x
AZ	SAE B 2 or 4-Bolt Flange, SAE C Shaft (1-1/4" - 14T)	x	x	x
GA	Greaseable SAE B 2-Bolt Rotatable Flange, SAE B Shaft (7/8" - 13T)	x	x	x
GH	Greaseable SAE B 2-Bolt Rotatable Flange, SAE BB Shaft (1" - 15T)			x
GB	Greaseable SAE B 4-Bolt Rotatable Flange, SAE B Shaft (7/8" - 13T)	x	x	x
GK	Greaseable SAE B 2 or 4-Bolt Flange, SAE B Shaft (7/8" - 13T)	x	x	x
GQ**	Greaseable SAE B 2 or 4-Bolt Flange, SAE B Shaft (7/8" - 13T)	x	x	x
GF	Greaseable SAE B 2 or 4-Bolt Flange, SAE BB Shaft (1" - 15T)	x	x	x
GZ	Greaseable SAE B 2 or 4-Bolt Flange, SAE C Shaft (1-1/4" - 14T)			x
GR	Greaseable Chelsea Special (Cloverleaf), SAE B Shaft (7/8" - 13T)	x	x	x
GY	Greaseable ISO 7653 Pump Mount DIN 5462 Shaft			x
RC	Rotatable SAE A 2-Bolt Flange, SAE A Shaft (5/8" - 9T)	x	x	x
RD	Rotatable SAE A 2-Bolt Flange, SAE B Shaft (7/8" - 13T)	x	x	x
RA	Rotatable SAE B 2-Bolt Flange, SAE B Shaft (7/8" - 13T)	x	x	x
RF	Rotatable SAE B 2-Bolt Flange, SAE BB Shaft (1" - 15T)	x	x	x
RB	Rotatable SAE B 4-Bolt Flange, SAE B Shaft (7/8" - 13T)	x	x	x
RE	Rotatable SAE B 4-Bolt Flange, SAE BB Shaft (1" - 15T)	x	x	x
RK	Rotatable SAE B 2 or 4-Bolt Flange, SAE B Shaft (7/8" - 13T)	x	x	x
RY	Rotatable ISO 7653 Pump Mount DIN 5462 Shaft	x	x	x
XD	Rd Standard Shaft (1-1/4" - 5/16" Key)	x	x	x
XR	Chelsea Special (Cloverleaf), SAE B Shaft (7/8" - 13T)	x	x	x
XV	1410 Series Companion Flange			x
XX***	1-1/4" Tapered Output Shaft w/ Keyway	x	x	x
XY	ISO 7653 Pump Mount DIN 5462 Shaft	x	x	x

** XQ/GQ same as XK/GK except flange rotated 90°

*** Order companion (379824) separately

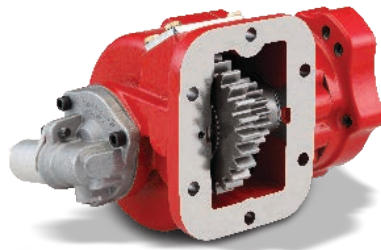
NOTE: Always check current price book for available options



252 Series

- 12V Hydraulic Shift
- Lightweight housing design
- Weather tight electrical connectors
- Integrated cartridge valve
- Compact size
- Torque up to 120 lbs-ft

Specifications Chart	Approximate Weight: 25 lbs. [11 kg]	
	252*D	252*M
Intermittent Torque Rating lbs-ft [Nm]	120 [163]	50 [68]
HP Rating for Intermittent Service		
At 500 RPM of Output Shaft HP [Kw]	11 [9]	5 [4]
At 1000 RPM of Output Shaft HP [Kw]	23 [17]	10 [7]

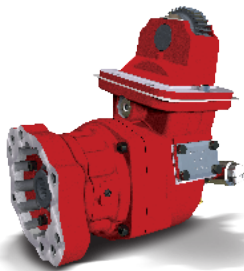


272 Series Air or Hydraulic

- Elec/Air or Elec/Hyd 12/24V shifting
- Integral and remote shift options available
- Continuous torque rating of 300 lbs-ft
- Electronic Overspeed Control
- Internal self-adjusting shaft brake option (patent #7159701)
- Smart Start option available

(Supersedes 230/231, 270/271, and 236 Series)

Specifications Chart	Approximate Weight: 49 lbs. [22 kg]								
	272*A	272*B	272*C	272*D	272*G	272*K	272*M	272*P	272*S
Intermittent & Continuous Torque Rating lbs-ft [Nm]	300 [407]	300 [407]	300 [407]	300 [407]	300 [407]	300 [407]	300 [407]	300 [407]	300 [407]
HP Rating for Intermittent & Continuous Service									
At 500 RPM of Output Shaft HP [Kw]	29 [21]	29 [21]	29 [21]	29 [21]	29 [21]	29 [21]	29 [21]	29 [21]	29 [21]
At 1000 RPM of Output Shaft HP [Kw]	57 [43]	57 [43]	57 [43]	57 [43]	57 [43]	57 [43]	57 [43]	57 [43]	57 [43]



272-Ford Series

- FORD TorqueShift® Transmission
- Multiple ratios available
- Smart Start option available
- Intermittent torque rating up to 300 lbs-ft
- Electronic Overspeed Control
- Fits F650/750 platforms ONLY

Specifications Chart	Approximate Weight: 55 lbs. [25 kg]						
	272F*C	272F*D	272F*G	272F*K	272F*M	272F*P	272F*S
Intermittent Torque Rating lbs-ft [Nm]	300 [407]	300 [407]	300 [407]	300 [407]	274 [371]	246 [333]	220 [298]
HP Rating for Intermittent Service							
At 500 RPM of Output Shaft HP [Kw]	29 [21]	29 [21]	29 [21]	29 [21]	26 [19]	23 [17]	21 [16]
At 1000 RPM of Output Shaft HP [Kw]	57 [43]	57 [43]	57 [43]	57 [43]	52 [39]	47 [35]	42 [31]

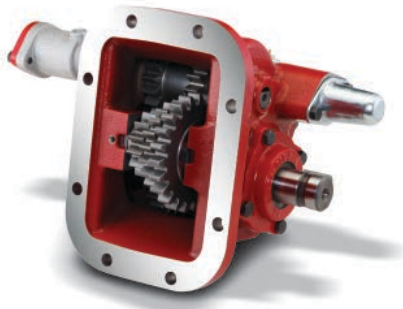
PTO Options Chart – PowerShift PTOs		252	272	272F
Lubrication				
P	Pressure Lube	x	x	x
R	Pressure Lube Valve Body Rotated 120°		x	
S	Pressure Lube Valve Body Rotated 240°		x	
W	Wet Spline - Hydraulic Shift Only, HV Input		x	
X	No Pressure Lube		x	
V	Wet Spline Valve Body Rotated 120° - Hydraulic Shift Only, HV Input		x	
Y	Wet Spline Valve Body Rotated 240° - Hydraulic Shift Only, HV Input		x	
Shifting				
B	12V Elec/Hyd	x	x	x
D	24V Elec/Hyd		x	
E	12V Elec/Hyd w/o Installation Kit		x	x
N	24V Elec/Hyd w/o Installation Kit		x	
K	12V Elec/Hyd w/ EOC		x	x
L	24V Elec/Hyd w/ EOC		x	
G	12V Elec/Hyd Remote Valve w/o EOC		x	
H	24V Elec/Hyd Remote Valve w/o EOC		x	
A	Manual Air Shift		x	
V	Manual Air Shift w/o Installation Kit		x	
R	12V Elec/Air Shift w/ EOC - Remote		x	
4	24V Elec/Air Shift w/ EOC - Remote		x	
J	12V Elec/Air Shift w/ EOC		x	
3	24V Elec/Air Shift w/ EOC		x	
P	12V Elec/Air Shift - Remote		x	
Q	24V Elec/Air Shift - Remote		x	
1	12V Elec/Air Shift		x	
2	24V Elec/Air Shift		x	
Output				
AD	SAE A 2-Bolt Flange, SAE AH Shaft (3/4" - 11T)	x		
XE	SAE A 2 or 4-Bolt Flange, SAE A Shaft (5/8" - 9T)	x		
RE	Rotatable SAE A 2-Bolt Flange, SAE A Shaft (5/8" - 9T)		x	x
RB	Rotatable SAE B 4-Bolt Flange, SAE B Shaft (7/8" - 13T)		x	x
RK	Rotatable SAE B 2 or 4-Bolt Flange, SAE B (7/8" - 13T)		x	x
RF	Rotatable SAE B 2 or 4-Bolt Flange, SAE BB Shaft (1" - 15T)		x	x
RZ	Rotatable SAE B 2 or 4-Bolt Flange, SAE C Shaft (1-1/4" - 14T)		x	x
RS	Rotatable SAE C 2 or 4-Bolt Flange, SAE C (1-1/4" - 14T)		x	x
RY	Rotatable ISO 7653 Pump Mount DIN 5462 Shaft		x	x
AB	DIN 120 Flange		x	
AC	DIN 100 Flange		x	
BD	Shaft Brake - 1-1/4" Round w/ 5/16" Key		x	
BV	Shaft Brake - 1410 Series Companion Flange		x	
SD	Smart Start - Rd Standard Shaft (1-1/4" - 5/16" Key)		x	x
SV	Smart Start - 1410 Series Companion Flange		x	x
XB	1" Round Shaft w/ 1/4" Key	x		
XD	Rd Standard Shaft (1-1/4" - 5/16" Key)		x	x
XR	Chelsea Special (Cloverleaf), SAE B Shaft (7/8" - 13T)		x	x
XV	1410 Series Companion Flange		x	x

Continued on Next Page

NOTE: Always check current price book for available options

PTO Options Chart – PowerShift PTOs		252	272	272F
Output (Continued)				
P37	Hyd. Pump 3.7 GPM @ 1000 RPM	x		
P42	Hyd. Pump 4.2 GPM @ 1000 RPM	x		
P71	Hyd. Pump 7.1 GPM @ 1000 RPM	x		
P82	Hyd. Pump 8.2 GPM @ 1000 RPM	x		
1121	Hyd. Pump 2.1 GPM @ 1000 RPM	x		
1126	Hyd. Pump 2.6 GPM @ 1000 RPM	x		
1137	Hyd. Pump 3.7 GPM @ 1000 RPM	x		
1462	Hyd. Pump 6.2 GPM @ 1000 RPM	x		

NOTE: Always check current price book for available options



348 Series

- Single low-speed forward and reverse
- Removable cover plate for adjusting backlash
- Shift options include air and lever
- Variety of input gears to cover most applications
- Integral 8-Bolt housing to reduce potential leak points

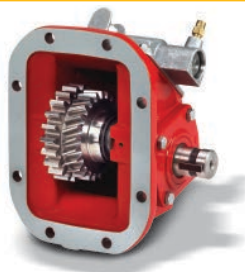
Specifications Chart	Approximate Weight: 32 lbs. [15 kg]	
	348*F	
Intermittent Torque Rating lbs-ft [Nm]	200 [271]	
HP Rating for Intermittent Service		
At 500 RPM of Output Shaft HP [Kw]	19 [14]	
At 1000 RPM of Output Shaft HP [Kw]	38 [28]	



489 Series

- 442 Series family, but with an 8-Bolt mounting flange
- No adapter plate needed
- Less installation time, less expense, and reduced leak points
- Wide range of shifter options and pump flanges
- Greaseable and rotatable flanges available

Specifications Chart	Approximate Weight: 30 lbs. [13.6 kg]										
	489 *A	489 *C	489 *F	489 *H	489 *L	489 *Q	489 *R	489 *S	489 *U	489 *W	489 *X
Intermittent Torque Rating lbs-ft [Nm]	250 [339]	250 [339]	250 [339]	250 [339]	250 [339]	225 [305]	225 [305]	200 [271]	195 [264]	175 [237]	140 [190]
HP Rating for Intermittent Service											
At 500 RPM of Output Shaft HP [Kw]	24 [18]	24 [18]	24 [18]	24 [18]	24 [18]	21 [16]	21 [16]	19 [14]	19 [14]	17 [12]	13 [10]
At 1000 RPM of Output Shaft HP [Kw]	48 [36]	48 [36]	48 [36]	48 [36]	48 [36]	43 [33]	43 [33]	38 [28]	37 [28]	33 [25]	27 [20]

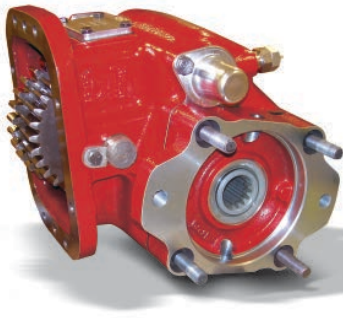


680 Series

- Excellent coverage for transmissions with 8-Bolt openings
- Deep mount housing option for Mack applications
- Designed for higher torque applications like blowers and high pressure hydraulics
- Wide range of shift and output options

Specifications Chart	Approximate Weight: 28.2 lbs. [12.8 kg]				
	680*F	680*H	680*Q	680*R	680*S
*Intermittent Torque Rating lbs-ft [Nm]	375 [508]	375 [508]	375 [508]	350 [475]	325 [441]
HP Rating for Intermittent Service					
At 500 RPM of Output Shaft HP [Kw]	36 [27]	36 [27]	36 [27]	33 [25]	31 [23]
At 1000 RPM of Output Shaft HP [Kw]	71 [53]	71 [53]	71 [53]	67 [50]	62 [46]
At 1500 RPM of Output Shaft HP [Kw]	107 [80]	107 [80]	107 [80]	100 [75]	93 [69]

*Above 1500 RPM: Contact Chelsea Technical for Approval



823 Series

- Most robust PTO in the industry
- Torque ratings up to 750 lbs-ft
- Lever shift standard
- Inspection cover for adjusting backlash
- Popular pump mounts available
- Seven (7) output options; four (4) shift options
- Wet Spline available

Specifications Chart	Approximate Weight: 76 lbs. [34.5 kg]						
	823*B	823*D	823*G	823*J	823*M	823*R	823*T
Intermittent Torque Rating lbs-ft [Nm]	750 [919]	750 [919]	750 [919]	750 [919]	750 [919]	550 [734]	500 [644]
HP Rating for Intermittent Service							
At 500 RPM of Output Shaft HP [Kw]	71 [53]	71 [53]	71 [53]	71 [53]	71 [53]	52 [38]	47 [35]
At 1000 RPM of Output Shaft HP [Kw]	143 [107]	143 [107]	143 [107]	143 [107]	143 [107]	104 [43]	95 [37]



863 Series

- Designed to fit transmissions with 8-Bolt openings
- Capable of up to 500 lbs-ft of intermittent torque
- Designed for maximum duty reversible applications such as large-capacity winches
- Lever shift is standard

Specifications Chart	Approximate Weight: 96 lbs. [44 kg]
	863*B
Intermittent Torque Rating lbs-ft [Nm]	500 [678]
HP Rating for Intermittent Service	
At 500 RPM of Output Shaft HP [Kw]	48 [36]
At 1000 RPM of Output Shaft HP [Kw]	95 [71]



880 Series

- Wide coverage for tough applications
- Speed ratios for high and low speed applications
- Removable shift cover for adjusting backlash
- Torque ratings up to 500 lbs-ft

Specifications Chart	Approximate Weight: 63 lbs. [28.6 kg]							
	880*B	880*D	880*G	880*J	880*M	880*Q	880*R	880*T
Intermittent Torque Rating lbs-ft [Nm]	500 [678]	500 [678]	500 [678]	500 [678]	500 [678]	450 [610]	400 [542]	350 [475]
HP Rating for Intermittent Service								
At 500 RPM of Output Shaft HP [Kw]	48 [36]	48 [36]	48 [36]	48 [36]	48 [36]	43 [32]	38 [28]	33 [25]
At 1000 RPM of Output Shaft HP [Kw]	95 [71]	95 [71]	95 [71]	95 [71]	95 [71]	86 [64]	76 [57]	67 [50]

PTO Options Chart – Mechanical PTOs		348	489	680	823	863	880
Lubrication							
P	Pressure Lube		x	x	x	x	x
X	No Pressure Lube	x	x	x	x	x	x
W	Wet Spline				x		
Shifting							
G	Air Shift (Opposite Output)	x					
P	12V Elec/Air Shift		x	x			x
C	Special Shift Control & Bracket Kit		x	x			
M	Constant Mesh		x	x	x		x
A	Air Shift		x	x	x		x
A	Air Shift (Same Side as Output)	x					
S	Air Shift w/ PTO/Dump Pump Combo Valve w/ Kick Out w/ Neutral Spring Return		x	x			
T	Air Shift w/ PTO/Dump Pump Combo Valve w/o Kick Out w/ Neutral Spring Return		x	x			
U	Air Shift w/ PTO/Dump Pump Combo Valve w/ Kick Out w/o Neutral Spring Return		x	x			
V	Air Shift w/o Installation Kit	x	x	x	x		x
W	Wire Shift		x	x			
X	Wire Shift w/o Cable & Knob		x	x			
Y	Lever Shift	x			x	x	x
H	No Shift Assembly		x	x			x
D	12V Elec/Air Shift Eaton Endurant		x				x
Q	24V Elec/Air Shift Eaton Endurant		x				
Output							
XG	Non Standard SAE A 2-Bolt Flange, Non Standard Shaft (3/4" - 3/16" Key) Long						
AK	SAE B 2-Bolt Flange, SAE B Shaft (7/8" - 13T)		x	x			
XU	SAE C 2-Bolt Flange, SAE C Shaft (1-1/4" - 14T)				x, w		
SQ	SAE B 4-Bolt Flange, SAE B Shaft (7/8" - 13T)		x				
XS	SAE C 4-Bolt Flange, SAE C Shaft (1-1/4" - 14T)				x, w		
XE	SAE A 2 or 4-Bolt Flange, SAE A Shaft (5/8" - 9T)		x	x			
XK	SAE B 2 or 4-Bolt Flange, SAE B Shaft (7/8" - 13T)		x	x			x
XQ**	SAE B 2 or 4-Bolt Flange, SAE B Shaft (7/8" - 13T)		x	x			
AF	SAE B 2 or 4-Bolt Flange, SAE BB Shaft (1" - 15T)		x	x			x
AZ	SAE B 2 or 4-Bolt Flange, SAE C Shaft (1-1/4" - 14T)		x	x			x
XS	SAE C 2 or 4-Bolt Flange, SAE C Shaft (1-1/4" - 14T)						x
GA	Greaseable SAE B 2-Bolt Rotatable Flange, SAE B Shaft (7/8" - 13T)		x	x			
GH	Greaseable SAE B 2-Bolt Rotatable Flange, SAE BB Shaft (1" - 15T)			x			
GU	Greaseable SAE C 2-Bolt Flange, SAE C Shaft (1-1/4" - 14T)				x		
GB	Greaseable SAE B 4-Bolt Rotatable Flange, SAE B Shaft (7/8" - 13T)		x	x			
GS	Greaseable SAE C 4-Bolt Flange, SAE C Shaft (1-1/4" - 14T)				x		x
GK	Greaseable SAE B 2 or 4-Bolt Flange, SAE B Shaft (7/8" - 13T)		x	x			
GQ**	Greaseable SAE B 2 or 4-Bolt Flange, SAE B Shaft (7/8" - 13T)		x	x			
GF	Greaseable SAE B 2 or 4-Bolt Flange, SAE BB Shaft (1" - 15T)		x	x			
GZ	Greaseable SAE B 2 or 4-Bolt Flange, SAE C Shaft (1-1/4" - 14T)			x			
GR	Greaseable Chelsea Special (Cloverleaf), SAE B Shaft (7/8" - 13T)		x	x			
GY	Greaseable ISO 7653 Pump Mount DIN 5462 Shaft			x			
RC	Rotatable SAE A 2-Bolt Flange, SAE A Shaft (5/8" - 9T)		x	x			
RD	Rotatable SAE A 2-Bolt Flange, SAE B Shaft (7/8" - 13T)		x	x			
RA	Rotatable SAE B 2-Bolt Flange, SAE B Shaft (7/8" - 13T)		x	x			
RB	Rotatable SAE B 4-Bolt Flange, SAE B Shaft (7/8" - 13T)		x	x			

** XQ/GQ same as XK/GK except flange rotated 90°

Continued on Next Page

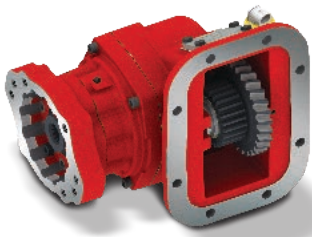
w = Wet Spline Option

NOTE: Always check current price book for available options

PTO Options Chart – Mechanical PTOs		348	489	680	823	863	880
Output (Cont'd)							
RE	Rotatable SAE B 4-Bolt Flange, SAE BB Shaft (1" - 15T)		x	x			
RK	Rotatable SAE B 2 or 4-Bolt Flange, SAE B Shaft (7/8" - 13T)		x	x			
RF	Rotatable SAE B 2 or 4-Bolt Flange, SAE BB Shaft (1" - 15T)		x	x			
RY	Rotatable ISO 7653 Pump Mount DIN 5462 Shaft		x	x			
AB	DIN 120				x		
AC	DIN 100				x		
XD	Rd Standard Shaft (1-1/4" - 5/16" Key)	x	x	x			
XR	Chelsea Special (Cloverleaf), SAE B Shaft (7/8" - 13T)		x	x			
XV	1410 Series Companion Flange			x	x	x	x
XX***	1-1/4" Tapered Output Shaft w/ Keyway		x	x			
XY	ISO 7653 Pump Mount DIN 5462 Shaft		x	x			x

*** Order companion (379824) separately

NOTE: Always check current price book for available options



(Supersedes 238 Series)

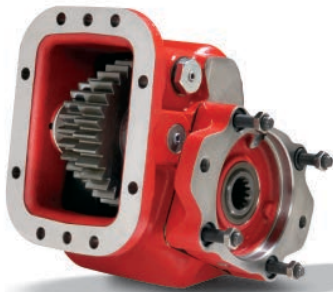
282 Series

- Elec/Hyd or Elec/Air 12 & 24 Volt shifting
- Integral or remote shift air valve options available
- Continuous torque rating of 300 lbs-ft
- Electronic Overspeed Control
- Internal self-adjusting shaft brake option (patent #7159701)

Specifications Chart

Approximate Weight: 49 lbs. [22 kg]

	282*B	282*C	282*D	282*G	282*K	282*M	282*P	282*S	282*T
Intermittent & Continuous Torque Rating lbs-ft [Nm]	300 [407]	300 [407]	300 [407]	300 [407]	300 [407]	300 [407]	300 [407]	300 [407]	300 [407]
HP Rating for Intermittent & Continuous Service									
At 500 RPM of Output Shaft HP [Kw]	29 [21]	29 [21]	29 [21]	29 [21]	29 [21]	29 [21]	29 [21]	29 [21]	29 [21]
At 1000 RPM of Output Shaft HP [Kw]	57 [43]	57 [43]	57 [43]	57 [43]	57 [43]	57 [43]	57 [43]	57 [43]	57 [43]



852 Series - Hydraulic

- Designed for heavy duty applications
- Three speed ratios
- Three output options
- Pressure lubrication standard
- Intermittent torque rating of 500 lbs-ft

Specifications Chart

Approximate Weight: 88 lbs. [40 kg]

	852*B	852*G	852*J
Intermittent Torque Rating lbs-ft [Nm]	500 [678]	500 [678]	500 [678]
HP Rating for Service			
At 500 RPM of Output Shaft HP [Kw]	48 [36]	48 [36]	48 [36]
At 1000 RPM of Output Shaft HP [Kw]	95 [71]	95 [71]	95 [71]



885 Series - Pneumatic

- Designed for heavy duty applications such as pneumatic blowers
- Rugged cast iron housing
- Four speed ratios to choose from
- Pressure lubrication available

Specifications Chart

Approximate Weight: 88 lbs. [40 kg]

	885*B	885*G	885*J	885*M
Intermittent Torque Rating lbs-ft [Nm]	500 [678]	500 [678]	500 [678]	500 [678]
HP Rating for Intermittent Service				
At 500 RPM of Output Shaft HP [Kw]	48 [36]	48 [36]	48 [36]	48 [36]
At 1000 RPM of Output Shaft HP [Kw]	95 [71]	95 [71]	95 [71]	95 [71]

PTO Options Chart – PowerShift PTOs		282	852	885
Lubrication				
P	Pressure Lube	x	x	x
R	Pressure Lube Valve Body Rotated 120°	x		
S	Pressure Lube Valve Body Rotated 240°	x		
W	Wet Spline	x		
X	No Pressure Lube	x		x
V	Wet Spline Valve Body Rotated 120°	x		
Y	Wet Spline Valve Body Rotated 240°	x		
Shifting				
A	Manual Air Shift	x		x
B	12V Elec/Hyd	x	x	
D	24V Elec/Hyd	x	x	
E	12V Elec/Hyd w/o Installation Kit	x		
N	24V Elec/Hyd w/o Installation Kit	x		x
K	12V Elec/Hyd w/ EOC	x	x	
L	24V Elec/Hyd w/ EOC	x	x	
G	12V Elec/Hyd Remote Valve w/o EOC	x		
H	24V Elec/Hyd Remote Valve w/o EOC	x		
V	Manual Air Shift w/o Installation Kit	x		
R	12V Elec/Air Remote w/ EOC	x		
J	12V Elec/Air w/ EOC	x		x
P	12V Elec/Air Remote	x		x
Q	24V Elec/Air Remote	x		x
F	No Valve		x	
1	12V Elec/Air	x		
2	24V Elec/Air	x		
3	24V Elec/Air w/ EOC	x		
4	24V Elec/Air Remote w/ EOC	x		
Output				
XU	SAE C 2-Bolt, SAE C Shaft (1-1/4" - 14T)		x	
XS	SAE C 4-Bolt, SAE C Shaft (1-1/4" - 14T)		x	
XS	SAE C 2 or 4-Bolt, SAE C Shaft (1-1/4" - 14T)			x
RE	Rotatable SAE A 2-Bolt Flange, SAE A Shaft (5/8" - 9T)	x		
RB	Rotatable SAE B 4-Bolt Flange, SAE B Shaft (7/8" - 13T)	x		
RK	Rotatable SAE B 2 or 4-Bolt Flange, SAE B Shaft (7/8" - 13T)	x		
RF	Rotatable SAE B 2 or 4-Bolt Flange, SAE BB Shaft (1" - 15T)	x		
RZ	Rotatable SAE B 2 or 4-Bolt Flange, SAE C Shaft (1-1/4" - 14T)	x		
RS	Rotatable SAE C 2 or 4-Bolt Flange, SAE C Shaft (1-1/4" - 14T)	x		
RY	Rotatable ISO 7653 Pump Mount DIN 5462 Shaft	x		
AB	DIN 120	x		
AC	DIN 100	x		
BD	Shaft Brake - Rd Standard Shaft (1-1/4" - 5/16" Key)	x		
BV	Shaft Brake - 1410 Series Companion Flange	x		
SD	Smart Start - Rd Standard Shaft (1-1/4" - 5/16" Key)	x		
SV	Smart Start - 1410 Series Companion Flange	x		
XD	Rd Standard Shaft (1-1/4" - 5/16" Key)	x		
XR	Chelsea Special (Cloverleaf), SAE B Shaft (7/8" - 13T)	x		
XV	1410 Series Companion Flange	x	x	x

NOTE: Always check current price book for available options



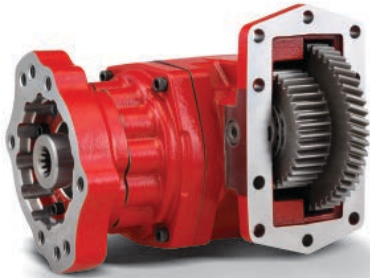
267 Series

- Ideal for applications requiring continuous power (non-shiftable)
- SuperTorque™ gears available for 20% higher intermittent torque ratings
- Wet Spline design virtually eliminates spline fretting
- No backlash to set

Specifications Chart

Approximate Weight: 35 lbs. [16 kg]

	267*B	267*D	267*G	267*S	267SB	267SD	267SG	267SS
Intermittent Torque Rating lbs-ft [Nm]	335 [454]	335 [454]	300 [407]	250 [339]	402 [545]	402 [545]	360 [488]	265 [359]
HP Rating for Intermittent Service								
At 500 RPM of Output Shaft HP [Kw]	32 [24]	32 [24]	29 [21]	24 [18]	38 [29]	38 [29]	34 [26]	25 [19]
At 1000 RPM of Output Shaft HP [Kw]	64 [48]	64 [48]	57 [43]	48 [36]	77 [57]	77 [57]	69 [51]	50 [38]



287 Series

- Ideal for applications requiring continuous power (non-shiftable)
- Wet Spline output options to eliminate spline fretting
- Rotatable flange options
- No backlash to set

Specifications Chart

Approximate Weight: 44 lbs. [20 kg]

	287*B	287*C	287*D	287*G	287*K	287*M	287*P	287*S	287*T
Continuous* Torque Rating lbs-ft [Nm]	300 [407]	410 [556]	390 [529]	360 [488]	340 [461]	318 [431]	290 [393]	265 [359]	240 [325]
HP Rating for Continuous Service									
At 500 RPM of Output Shaft HP [Kw]	29 [21]	39 [29]	37 [28]	34 [26]	32 [24]	30 [23]	28 [21]	25 [19]	23 [17]
At 1000 RPM of Output Shaft HP [Kw]	57 [43]	78 [58]	74 [56]	69 [51]	65 [48]	61 [45]	55 [41]	50 [38]	46 [34]



877 Series

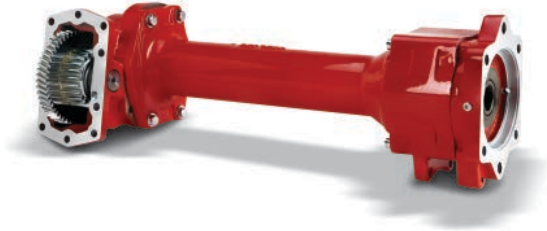
- Ideal for applications requiring continuous power (non-shiftable)
- Continuous torque capacity up to 670 lbs-ft [908 Nm]
- Wet Spline output options to eliminate spline fretting
- Compact housing height reduces clearance issues

Specifications Chart

Approximate Weight: 56 lbs. [25 kg]

	877*A	877*B	877*C	877*D	877*E	877*F	877*K	877*G	877*H	877*J
Continuous* Torque Rating lbs-ft [Nm]	670 [908]	630 [854]	590 [800]	550 [746]	485 [658]	430 [583]	404 [548]	380 [515]	355 [481]	335 [454]
HP Rating for Continuous Service										
At 500 RPM of Output Shaft HP [Kw]	64 [48]	60 [45]	56 [42]	52 [39]	46 [35]	41 [31]	38 [29]	36 [27]	34 [25]	32 [24]
At 1000 RPM of Output Shaft HP [Kw]	128 [95]	120 [90]	112 [84]	105 [78]	92 [69]	82 [61]	77 [58]	72 [54]	68 [51]	64 [48]

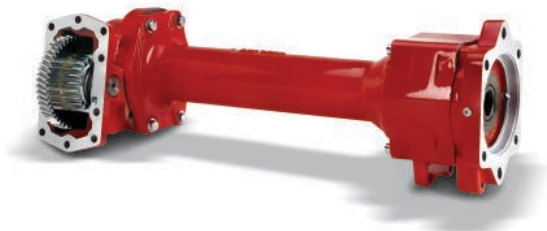
*Continuous Torque Ratings are good for both Intermittent and Continuous applications.



897 Series

- Allison 3000/4000 Family transmissions
- Moves the PTO output flange to the rear of the transmission
- Continuous torque ratings up to 670 lbs-ft
- Installs in two pieces for simplified installation
- Solid 1-piece output shaft
- Available for most cooler/retarder installations
- All pump outputs are Wet Spline to eliminate spline fretting

Specifications Chart	Approximate Weight: 86 lbs. [39 kg]							
	897*A	897*B	897*C	897*D	897*E	897*F	897*G	897*H
Continuous Torque Rating lbs-ft [Nm]	670 [908]	630 [854]	590 [800]	550 [746]	485 [658]	430 [583]	380 [515]	355 [481]
HP Rating for Continuous Service								
At 500 RPM of Output Shaft HP [Kw]	64 [48]	60 [45]	56 [42]	52 [39]	46 [35]	41 [31]	36 [27]	34 [25]
At 1000 RPM of Output Shaft HP [Kw]	128 [95]	120 [90]	112 [84]	105 [78]	92 [69]	82 [61]	72 [54]	68 [51]



899 Series

- Allison 4700/4800 Series transmissions
- Moves the PTO output flange to the rear of the transmission
- Continuous torque ratings up to 670 lbs-ft
- Installs in two pieces for simplified installation
- Solid 1-piece output shaft
- Available for most cooler/retarder installations
- All pump outputs are Wet Spline to eliminate spline fretting

Specifications Chart	Approximate Weight: 86 lbs. [39 kg]							
	899*A	899*B	899*C	899*D	899*E	899*F	899*G	899*H
Continuous* Torque Rating lbs-ft [Nm]	670 [908]	630 [854]	590 [800]	550 [746]	485 [658]	430 [583]	380 [515]	355 [481]
HP Rating for Continuous Service								
At 500 RPM of Output Shaft HP [Kw]	64 [48]	60 [45]	56 [42]	52 [39]	46 [35]	41 [31]	36 [27]	34 [25]
At 1000 RPM of Output Shaft HP [Kw]	128 [95]	120 [90]	112 [84]	105 [78]	92 [69]	82 [61]	72 [54]	68 [51]

*Continuous Torque Ratings are good for both Intermittent and Continuous applications.

PTO Options Chart – Constant Mesh PTOs		267*	287	877	897	899
Lubrication						
P	Pressure Lube	x	x	x		
R	Pressure Lube Valve Body Rotated 120°		x			
S	Pressure Lube Valve Body Rotated 240°		x			
Y	Wet Spline Valve Body Rotated 240°		x			
V	Wet Spline Valve Body Rotated 120°		x			
W	Wet Spline	x	x	x	x	x
Shifting						
M	Constant Mesh	x	x	x	x	x
Output						
AK	SAE B 2-Bolt Flange, SAE B Shaft (7/8" - 13T)	x, w				
CS	SAE C 4-Bolt Flange, SAE C Shaft (1-1/4" - 14T)				w (3)	w (3)
ZS	SAE C 4-Bolt Flange, SAE C Shaft (1-1/4" - 14T)				w	w
DA	SAE D 4-Bolt Flange, SAE D Shaft (1-3/4" - 13T)				w (5)	w (5)
XE	SAE A 2 or 4-Bolt Flange, SAE A Shaft (5/8" - 9T)	x				
XK	SAE B 2 or 4-Bolt Flange, SAE B Shaft (7/8" - 13T)	x				
XQ	SAE B 2 or 4-Bolt Flange, SAE B Shaft (7/8" - 13T)	x				
AF	SAE B 2 or 4-Bolt Flange, SAE BB Shaft (1" - 15T)	x, w			w (5)	w (5)
CF	SAE B 2 or 4-Bolt Flange, SAE BB Shaft (1" - 15T)				w (3)	w (3)
AZ	SAE B 2 or 4-Bolt Flange, SAE C Shaft (1-1/4" - 14T)	x			w (5)	w (5)
CZ	SAE B 2 or 4-Bolt Flange, SAE C Shaft (1-1/4" - 14T)				w (3)	w (3)
XS	SAE C 2 or 4-Bolt, SAE C Shaft (1-1/4" - 14T)				w (5)	w (5)
GA	Greaseable SAE B 2-Bolt Rotatable Flange, SAE B Shaft (7/8" - 13T)	x				
GB	Greaseable SAE B 4-Bolt Rotatable Flange, SAE B Shaft (7/8" - 13T)	x				
GK	Greaseable SAE B 2 or 4-Bolt Flange, SAE B Shaft (7/8" - 13T)	x				
GQ	Greaseable SAE B 2 or 4-Bolt Flange, SAE B Shaft (7/8" - 13T)	x				
GF	Greaseable SAE B 2 or 4-Bolt Flange, SAE BB Shaft (1" - 15T)	x				
GR	Greaseable Chelsea Special (Cloverleaf), SAE B Shaft (7/8" - 13T)	x				
RC	Rotatable SAE A 2-Bolt Flange, SAE A Shaft (5/8" - 9T)	x				
RD	Rotatable SAE A 2-Bolt Flange, SAE B Shaft (7/8" - 13T)	x				
RA	Rotatable SAE B 2-Bolt Flange, SAE B Shaft (7/8" - 13T)	x				
RB	Rotatable SAE B 4-Bolt Flange, SAE B Shaft (7/8" - 13T)	x	x, w			
RE	Rotatable SAE B 4-Bolt Flange, SAE BB Shaft (1" - 15T)	x				
RK	Rotatable SAE B 2 or 4-Bolt Flange, SAE B Shaft (7/8" - 13T)	x	x			
RF	Rotatable SAE B 2 or 4-Bolt Flange, SAE BB Shaft (1" - 15T)	x	x	x, w		
RZ	Rotatable SAE B 2 or 4-Bolt Flange, SAE C Shaft (1-1/4" - 14T)		x, w	x, w		
RS	Rotatable SAE C 2 or 4-Bolt Flange, SAE C Shaft (1-1/4" - 14T)	x	x, w	x, w		
RY	Rotatable ISO 7653 Pump Mount DIN 5462 Shaft	x, w	x	x, w		
AB	DIN 120 Flange		x	x	x	x
AC	DIN 100 Flange		x	x	x	x
XD	Rd Standard Shaft (1-1/4" - 5/16" Key)	x	x			
XR	Chelsea Special (Cloverleaf), SAE B Shaft (7/8" - 13T)	x				
XV	1410 Series Companion Flange		x	x	x (5)	x (5)
XX	1-1/4" Tapered Output Shaft w/ Keyway	x				
XY	ISO 7653 Pump Mount DIN 5462 Shaft	x			w (3)	w (3)

* Any 267 Series using a 3 Arrangement requiring a SAE B Output must use the XQ or AK Output Option due to interference between the XK Flange and the Pressure Lube Fitting.

(3) = 3 Assembly Arrangement

(5) = 5 Assembly Arrangement

w = Wet Spline Option

NOTE: Always check current price book for available options



280 Series 3 & 5 Assembly Hydraulic

- 12V or 24V Hydraulic shift
- Continuous Torque up to 390 lbs-ft
- Wet Spline output options to eliminate spline fretting
- Industry first rotatable Wet Spline
- Smart Start available for Hi-Torque start-up
- Electronic Overspeed Control (EOC) protects driven equipment

Specifications Chart	Approximate Weight: 49 lbs. [22 kg]								
	280*B	280*C	280*D	280*G	280*K	280*M	280*P	280*S	280*T
Continuous Torque Rating lbs-ft [Nm]	300 [407]	390 [529]	390 [529]	360 [488]	340 [461]	318 [431]	290 [393]	265 [359]	240 [325]
HP Rating for Continuous Service									
At 500 RPM of Output Shaft HP [Kw]	29 [21]	37 [28]	37 [28]	34 [26]	32 [24]	30 [23]	28 [21]	25 [19]	23 [17]
At 1000 RPM of Output Shaft HP [Kw]	57 [43]	74 [56]	74 [56]	69 [51]	65 [48]	61 [45]	55 [41]	50 [38]	46 [34]



280 Series 8 Assembly Hydraulic

- 12V or 24V Hydraulic shift
- Continuous torque up to 390 lbs-ft
- Wet Spline output options to eliminate spline fretting
- Smart Start available for Hi-Torque start-up
- Electronic Overspeed Control (EOC) protects driven equipment

Specifications Chart	Approximate Weight: 49 lbs. [22 kg]								
	280*B	280*C	280*D	280*G	280*M	280*P	280*S	280*T	
Continuous Torque Rating lbs-ft [Nm]	300 [407]	390 [529]	390 [529]	360 [488]	318 [431]	290 [393]	265 [359]	240 [325]	
HP Rating for Continuous Service									
At 500 RPM of Output Shaft HP [Kw]	29 [21]	37 [28]	37 [28]	34 [26]	30 [23]	28 [21]	25 [19]	23 [17]	
At 1000 RPM of Output Shaft HP [Kw]	57 [43]	74 [56]	74 [56]	69 [51]	61 [45]	55 [41]	50 [38]	46 [34]	



870 Series Hydraulic

- 12V or 24V Hydraulic shift
- Continuous Torque capacity up to 670 lbs-ft [908 Nm]
- Compact housing height reduces clearance issues
- Wet Spline output options to eliminate spline fretting
- Remote mount valve solves installation interference problems
- Electronic Overspeed Control (EOC) protects driven equipment
- Smart Start available for Hi-Torque start-up

Specifications Chart	Approximate Weight: 56 lbs. [25 kg]									
	870*A	870*B	870*C	870*D	870*E	870*F	870*G	870*H	870*J	
Continuous Torque Rating lbs-ft [Nm]	670 [908]	630 [854]	590 [800]	550 [746]	485 [658]	430 [583]	380 [515]	355 [481]	335 [454]	
HP Rating for Continuous Service										
At 500 RPM of Output Shaft HP [Kw]	64 [48]	60 [45]	56 [42]	52 [39]	46 [35]	41 [31]	36 [27]	34 [25]	32 [24]	
At 1000 RPM of Output Shaft HP [Kw]	128 [95]	120 [90]	112 [84]	105 [78]	92 [69]	82 [61]	72 [54]	68 [51]	64 [48]	

890 Series Hydraulic



- 12V or 24V Hydraulic shift
- Allison 3000/4000 Family transmissions
- Moves the PTO output flange to the rear of the transmission
- Continuous torque ratings up to 670 lbs-ft
- Installs in two pieces for simplified installation
- Solid 1-piece output shaft
- All pump outputs are Wet Spline to eliminate spline fretting

Specifications Chart

Approximate Weight: 97 lbs. [44 kg]

	890*A	890*B	890*C	890*D	890*E	890*F	890*G	890*H
Continuous Torque Rating lbs-ft [Nm]	670 [908]	630 [854]	590 [800]	550 [746]	485 [658]	430 [583]	379 [513]	356 [482]
HP Rating for Continuous Service								
At 500 RPM of Output Shaft HP [Kw]	64 [48]	60 [45]	56 [42]	52 [39]	46 [35]	41 [31]	36 [27]	34 [25]
At 1000 RPM of Output Shaft HP [Kw]	128 [95]	120 [90]	112 [84]	105 [78]	92 [69]	82 [61]	72 [53]	68 [50]

892 Series Hydraulic



- 12V or 24V Hydraulic shift
- Allison 4700/4800 Series transmissions
- Moves the PTO output flange to the rear of the transmission
- Continuous torque ratings up to 670 lbs-ft
- Installs in two pieces for simplified installation
- Solid 1-piece output shaft
- All pump outputs are Wet Spline to eliminate spline fretting

Specifications Chart

Approximate Weight: 97 lbs. [44 kg]

	892*A	892*B	892*C	892*D	892*E	892*F
Continuous Torque Rating lbs-ft [Nm]	670 [908]	630 [854]	590 [800]	550 [746]	485 [658]	430 [583]
HP Rating for Continuous Service						
At 500 RPM of Output Shaft (HP) [Kw]	64 [48]	60 [45]	56 [42]	52 [39]	46 [35]	41 [31]
At 1000 RPM of Output Shaft (HP) [Kw]	128 [95]	120 [90]	112 [84]	105 [78]	92 [69]	82 [61]

PTO Options Chart – PowerShift PTOs		280	870	890	892
Lubrication					
P	Pressure Lube	X	X		
R	Pressure Lube Valve Body Rotated 120°	X	X		
S	Pressure Lube Valve Body Rotated 240°	X	X		
V	Wet Spline Valve Body Rotated 120°	X	X		
Y	Wet Spline Valve Body Rotated 240°	X	X		
W	Wet Spline	X	X	X	X
Shifting					
B	12V Elec/Hyd	X	X	X	X
D	24V Elec/Hyd	X	X	X	X
E	12V Elec/Hyd w/o Installation Kit	X	X		
N	24V Elec/Hyd w/o Installation Kit	X	X		
K	12V Elec/Hyd Valve - Remote w/ EOC	X	X	X	X
L	24V Elec/Hyd Valve - Remote w/ EOC	X	X	X	X
G	12V Elec/Hyd - Remote w/o EOC	X	X	X	X
H	24V Elec/Hyd - Remote w/o EOC	X	X	X	X
S	Air Shift w/ PTO/Dump Pump Combo Valve w/ Kick Out w/ Neutral Spring Return	X			
T	Air Shift w/ PTO/Dump Pump Combo Valve w/o Kick Out w/ Neutral Spring Return	X			
Output					
CS	SAE C 4-Bolt Flange, SAE C Shaft (1-1/4" - 14T)			w (3)	w (3)
ZS	SAE C 4-Bolt Flange, SAE C Shaft (1-1/4" - 14T)			x	x
DA	SAE D 4-Bolt Flange, SAE D Shaft (1-3/4" - 13T)			w (5)	w (5)
AF	SAE B 2 or 4-Bolt Flange, SAE BB Shaft (1" - 15T)			w (5)	w (5)
CF	SAE B 2 or 4-Bolt Flange, SAE BB Shaft (1" - 15T)			w (3)	w (3)
AZ	SAE B 2 or 4-Bolt Flange, SAE C Shaft (1-1/4" - 14T)			w (5)	w (5)
CZ	SAE B 2 or 4-Bolt Flange, SAE C Shaft (1-1/4" - 14T)			w (3)	w (3)
XS	SAE C 2 or 4-Bolt Flange, SAE C Shaft (1-1/4" - 14T)			w (5)	w (5)
RB	Rotatable SAE B 4-Bolt Flange, SAE B Shaft (7/8" - 13T)	x, w			
RK	Rotatable SAE B 2 or 4-Bolt Flange, SAE B Shaft (7/8" - 13T)	x			
RF	Rotatable SAE B 2 or 4-Bolt Flange SAE BB Shaft (1" - 15T)	x	x, w		
RZ	Rotatable SAE B 2 or 4-Bolt Flange, SAE C Shaft (1-1/4" - 14T)	x, w	x, w		
RS	Rotatable SAE C 2 or 4-Bolt Flange, SAE C Shaft (1-1/4" - 14T)	x, w	x, w		
RY	Rotatable ISO 7653 Pump Mount DIN 5462 Shaft	x	x, w		
AB	DIN 120 Flange	x	x	x	x
AC	DIN 100 Flange	x	x	x	x
BB	Shaft Brake - DIN 120 Flange		x		
BC	Shaft Brake - DIN 100 Flange		x		
BD	Shaft Brake - Rd Standard Shaft (1-1/4" - 5/16" Key)	x			
BV	Shaft Brake - 1410 Series Companion Flange	x	x		
SB	Smart Start - DIN 120	x	x		
SC	Smart Start - DIN 100	x	x		
SD	Smart Start - Rd Standard Shaft (1-1/4" - 5/16" Key)	x			
SV	Smart Start - 1410 Series Companion Flange	x	x		
XD	Rd Standard Shaft (1-1/4" - 5/16" Key)	x			
XR	Chelsea Special (Cloverleaf), SAE B Shaft (7/8" - 13T)	x			
XV	1410 Series Companion Flange	x	x	x (5)	x (5)
XY	ISO 7653 Pump Mount DIN 5462 Shaft			w (3)	w (3)

(3) = 3 Assembly Arrangement

(5) = 5 Assembly Arrangement

w = Wet Spline Option

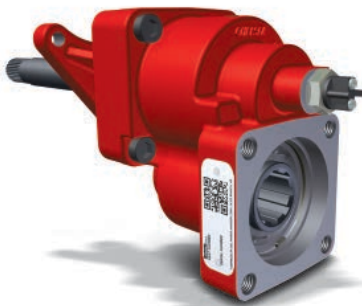
NOTE: Always check current price book for available options



511 Series

- Air Shift
- Continuous torque rating of 590 lbs-ft [800 Nm]
- Rear mount design requires less mounting space and simplifies installation
- No gear backlash to set, simplifies installation
- Wet Spline outputs available to eliminate spline fretting

Specifications Chart	Approximate Weight: 4.2 lbs. [1.9 kg]	
	511*R	
Intermittent & Continuous Torque Rating lbs-ft [Nm]	590 [800]	
HP Rating for Intermittent & Continuous Service		
At 500 RPM of Output Shaft HP [Kw]	56 [42]	
At 1000 RPM of Output Shaft HP [Kw]	112 [84]	



523 Series

- Air Shift
- Continuous torque rating of 258 lbs-ft [350 Nm]
- Rear mount design requires less mounting space and simplifies installation
- No gear backlash to set, simplifies installation
- Wet Spline outputs available to eliminate spline fretting

Specifications Chart	Approximate Weight: 12 lbs. [5.4 kg]	
	523*T	523*V
Intermittent & Continuous Torque Rating lbs-ft [Nm]	258 [350]	258 [350]
HP Rating for Intermittent & Continuous Service		
At 500 RPM of Output Shaft HP [Kw]	25 [18]	25 [18]
At 1000 RPM of Output Shaft HP [Kw]	49 [37]	49 [37]



541 Series

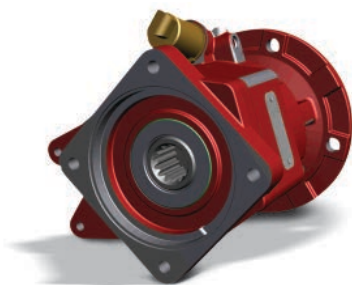
- Thrushaft® design for Eaton® Fuller® transmissions
- Three speed ratios available
- Two shift options available
- Direct mount pump flanges or driveshaft output options
- Continuous torque up to 400 lbs-ft

Specifications Chart	Approximate Weight: 12 lbs. [5.4 kg]		
	541*L	541*M	541*N
Continuous Torque Rating lbs-ft [Nm]	400 [542]	350 [475]	300 [407]
HP Rating for Continuous Duty			
At 500 RPM of Output Shaft HP [Kw]	38 [28]	33 [25]	29 [21]
At 1000 RPM of Output Shaft HP [Kw]	76 [57]	67 [50]	57 [43]

PTO Options Chart – Rear Mount PTOs		511	523	541
Input Gear Designator				
AA	ZF	X	X	
AB	Eaton & Iveco 2845.6	X	X	
AC	ZF-AS Tronic Meritor Freedomline™	X	X	
AG	Volvo V7		X	
AH	ZF	X	X	
AQ	ZF	X	X	
AR	Eaton	X	X	
AS	Volvo/Mack	X	X	
AU	Fuller			X
BD	Fuller			X
BJ	Fuller			X
LG	Eaton	X	X	
LQ	Eaton Procision		X	
Lubrication				
X	Non Wet Spline	X	X	X
W	Wet Spline	X	X	X
Shifting				
H	No Shift Kit	X	X	
P	12V Elec/Air Shift	X	X	
Q	24V Elec/Air Shift	X	X	
F	ZF-AS Tronic Meritor Freedomline™	X	X	
A	Air Shift	X	X	X
V	Volvo I-Shift/Mack mDrive Kit	X	X	
D	Eaton Procision		X	
Y	Lever Shift			X
Output				
XK	SAE B 2 or 4-Bolt Flange, SAE B Shaft (7/8" - 13T)	X	W	X
XV	1410 Series Companion Flange	X	X	X
XY	ISO 7653 Pump Mount DIN 5462 Shaft	W	X, W	

w = Wet Spline Option

NOTE: Always check current price book for available options



590 Series Hydraulic

- 12V or 24V Hydraulic shift
- Reduced installation time over side mounted PTOs
- No backlash to set
- Excellent clearance for direct mounted pumps
- Heavy Duty torque rating of 650 lbs-ft
- PTO/Pump Support Bracket included
- Superior power to weight ratio

Specifications Chart	Approximate Weight: 50 lbs. [22.8 kg]
	590*R
* Continuous Torque Rating lbs-ft [Nm]	650 [881]
HP Rating for Continuous Service	
At 500 RPM of Output Shaft HP [Kw]	62 [46]
At 1000 RPM of Output Shaft HP [Kw]	124 [93]
*For the 590 Series, 650 lbs-ft Torque Rating is for both Intermittent and Continuous, all Output Options.	

PTO Options Chart – Rear Mount PTOs		590
Inut Gear Designator		
FJ	Allison TC10	x
Lubrication		
W	Wet Spline	x
Shifting		
B	12V Elec/Hyd	x
D	24V Elec/Hyd	x
Output		
CS	SAE C 4-Bolt Flange, SAE C Shaft (1-1/4" - 14T)	x
CK	SAE B 2 or 4-Bolt Flange, SAE B Shaft (7/8" - 13T)	x
CF	SAE B 2 or 4-Bolt Flange, SAE BB Shaft (1" - 15T)	x
CZ	SAE B 2 or 4-Bolt Flange, SAE C Shaft (1-1/4" - 14T)	x
XV	1410 Series Companion Flange	x
XY	ISO 7653 Pump Mount DIN 5462 Shaft	x

w = Wet Spline Option

NOTE: Always check current price book for available options



249 Series – 6-Bolt

- 12V Hydraulic shift
- Ford TorqShift® 6R140 Transmissions
- Noise suppression system
- Single hose connection and integrated actuation valve
- Intermittent torque rating of 200 lbs-ft
- Pump flows up to 18 GPM at 1200 engine RPM
- PTO output speed of 124% of engine

Specifications Chart	Approximate Weight: 28 lbs. [12.7 kg]
	249*M
Intermittent Torque Rating (lbs-ft) [Nm]	200 [271]
HP Rating for Intermittent & Continuous Service	
At 1200 RPM of Output Shaft HP [Kw]	Up to 60 [45]



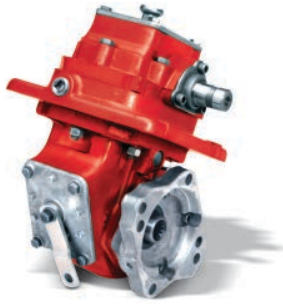
249V Series – 6-Bolt

- 12V Hydraulic shift
- Ford TorqShift® 6R140 Transmissions
- Noise suppression system
- Integral Denison Vane Pump with Pump flows up to 31 GPM at 1200 engine RPM
- Single hose connection and integrated actuation valve
- Intermittent torque rating of 200 lbs-ft

Specifications Chart	Approximate Weight: 54 lbs. [24.5 kg]
	249V*M
Intermittent Torque Rating (lbs-ft) [Nm]	200 [271]
HP Rating for Intermittent & Continuous Service	
At 1200 RPM of Output Shaft HP [Kw]	Up to 60 [45]

PTO Options Chart – PowerShift PTOs		249	249V
Lubrication			
X	No Pressure Lube	x	x
Shifting			
B	12V Elec/Hyd	x	x
K	12V Elec/Hyd w/ Electronic Overspeed Control (EOC)	x	x
E	Less Wiring Harness	x	x
Output			
AD	SAE A 2-Bolt Flange, SAE AH Shaft (3/4" - 11T)	x	
SD	Smart Start - Rd Standard Shaft (1-1/4" - 5/16" Key)	x	
XD	Rd Standard Shaft (1-1/4" - 5/16" Key)	x	
XP	Special SAE A Pilot 2-Bolt Flange, SAE B Shaft (7/8" - 13T)	x	
08	Hyd. Pump 12.0 GPM @ 1200 Eng. RPM 4 x 2 only	x	
09	Hyd. Pump 14.0 GPM @ 1200 Eng. RPM 4 x 2 only	x	
11	Hyd. Pump 16.0 GPM @ 1200 Eng. RPM 4 x 2 only	x	
15	Hyd. Pump 18.9 GPM @ 1200 Eng. RPM 4 x 2 only	x	
16	Hyd. Pump 2.4 GPM @ 1200 Eng. RPM	x	
26	Hyd. Pump 3.9 GPM @ 1200 Eng. RPM	x	
32	Hyd. Pump 4.7 GPM @ 1200 Eng. RPM	x	
37	Hyd. Pump 5.5 GPM @ 1200 Eng. RPM	x	
42	Hyd. Pump 6.3 GPM @ 1200 Eng. RPM	x	
55	Hyd. Pump 8.2 GPM @ 1200 Eng. RPM	x	
61	Hyd. Pump 9.0 GPM @ 1200 Eng. RPM	x	
71	Hyd. Pump 10.6 GPM @ 1200 Eng. RPM	x	
82	Hyd. Pump 12.2 GPM @ 1200 Eng. RPM	x	
87	Hyd. Pump 12.9 GPM @ 1200 Eng. RPM	x	
V08	08 Cartridge @ 1.61 in ³ /rev		x
V10	10 Cartridge @ 2.08 in ³ /rev		x
V12	12 Cartridge @ 2.26 in ³ /rev		x
V14	14 Cartridge @ 2.81 in ³ /rev		x
V17	17 Cartridge @ 3.56 in ³ /rev		x
V20	20 Cartridge @ 3.89 in ³ /rev		x
V22	22 Cartridge @ 4.29 in ³ /rev		x
V25	25 Cartridge @ 4.84 in ³ /rev		x
VIT	Less Cartridge		x

NOTE: Always check current price book for available options



2442 Series

- The economical 2442 Series is a manual shift PTO
- Operator must stop the engine before shifting
- Available in seven different speed ratios ranging from 39% to 123% of engine speed
- Eleven shift options available; twenty-five output options

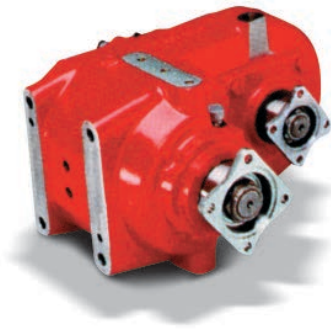
Specifications Chart	Approximate Weight: 69 lbs. [31 kg]						
	2442*F	2442*L	2442*Q	2442*S	2442*U	2442*W	2442*X
Percent of Engine Speed	39%	50%	54%	74%	89%	104%	123%
Intermittent Torque Rating lbs-ft [Nm]	250 [339]	250 [339]	225 [305]	170 [230]	140 [190]	120 [163]	100 [136]
HP Rating for Intermittent Service							
At 500 RPM of Output Shaft HP [Kw]	24 [18]	24 [18]	21 [16]	16 [12]	13 [10]	11 [9]	10 [7]
At 1000 RPM of Output Shaft HP [Kw]	48 [36]	48 [36]	43 [32]	32 [24]	27 [20]	23 [17]	19 [14]

PTO Options Chart – Crank Shaft PTO		2442
Shifting		
H	No Shift Assembly	x
P	12V Elec/Air	x
C	Heavy Duty Bracket Less Cable	x
M	Constant Mesh	x
A	Air Shift	x
S	Air Shift w/ PTO/Dump Pump Combo Valve w/ Kick Out w/ Neutral Spring Return	x
T	Air Shift w/ PTO/Dump Pump Combo Valve w/o Kick Out w/ Neutral Spring Return	x
U	Air Shift w/ PTO/Dump Pump Combo Valve w/ Kick Out w/o Neutral Spring Return	x
V	Air Shift Less Installation Kit	x
W	Cable Shift	x
X	Less Cable & Knob	x
Output		
AK	SAE B 2-Bolt Flange, SAE B Shaft (7/8" - 13T)	x
SQ	SAE B 4-Bolt Flange, SAE B Shaft (7/8" - 13T)	x
XE	SAE A 2 or 4-Bolt Flange, SAE A Shaft (5/8" - 9T)	x
XK	SAE B 2 or 4-Bolt Flange, SAE B Shaft (7/8" - 13T)	x
XQ**	SAE B 2 or 4-Bolt Flange, SAE B Shaft (7/8" - 13T)	x
AF	SAE B 2 or 4-Bolt Flange, SAE BB Shaft (1" - 15T)	x
AZ	SAE B 2 or 4-Bolt Flange, SAE C Shaft (1-1/4" - 14T)	x
GA	Greaseable SAE B 2-Bolt Rotatable Flange, SAE B Shaft (7/8" - 13T)	x
GB	Greaseable SAE B 4-Bolt Rotatable Flange, SAE B Shaft (7/8" - 13T)	x
GK	Greaseable SAE B 2 or 4-Bolt Flange, SAE B Shaft (7/8" - 13T)	x
GQ**	Greaseable SAE B 2 or 4-Bolt Flange, SAE B Shaft (7/8" - 13T)	x
GF	Greaseable SAE B 2 or 4-Bolt Flange, SAE BB Shaft (1" - 15T)	x
GR	Greaseable Chelsea Special (Cloverleaf), SAE B Shaft (7/8" - 13T)	x
RC	Rotatable SAE A 2-Bolt Flange, SAE A Shaft (5/8" - 9T)	x
RD	Rotatable SAE A 2-Bolt Flange, SAE B Shaft (7/8" - 13T)	x
RA	Rotatable SAE B 2-Bolt Flange, SAE B Shaft (7/8" - 13T)	x
RF	Rotatable SAE B 2-Bolt Flange, SAE BB Shaft (1" - 15T)	x
RB	Rotatable SAE B 4-Bolt Flange, SAE B Shaft (7/8" - 13T)	x
RE	Rotatable SAE B 4-Bolt Flange, SAE BB Shaft (1" - 15T)	x
RK	Rotatable SAE B 2 or 4-Bolt Flange, SAE B Shaft (7/8" - 13T)	x
RY	Rotatable ISO 7653 Pump Mount DIN 5462 Shaft	x
XD	Rd Standard Shaft (1-1/4" - 5/16" Key)	x
XR	Chelsea Special (Cloverleaf), SAE B Shaft (7/8" - 13T)	x
XX***	1-1/4" Tapered Output Shaft w/ Keyway	x
XY	ISO 7653 Pump Mount DIN 5462 Shaft	x

** XQ/GQ same as XK/GK except flange rotated 90°

*** Order companion (379824) separately

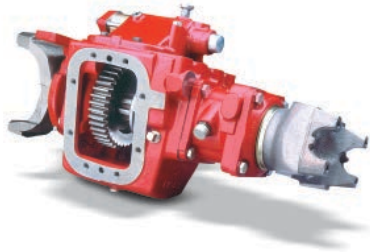
NOTE: Always check current price book for available options



901 Series

- Used on medium duty trucks that have applications requiring the torque capacity of an 8-Bolt PTO
- Provides 100% of input speed
- Mount in any orientation with the PTO shaft going to the front or rear of the truck
- Air and lever shift available, along with three direct mount flanges

Specifications Chart	Approximate Weight: 185 lbs. [84 kg]	
	901	
Intermittent Torque Rating lbs-ft [Nm]	500 [678]	
HP Rating for Intermittent Service		
At 500 RPM of Output Shaft HP [Kw]	48 [36]	
At 1000 RPM of Output Shaft HP [Kw]	95 [71]	

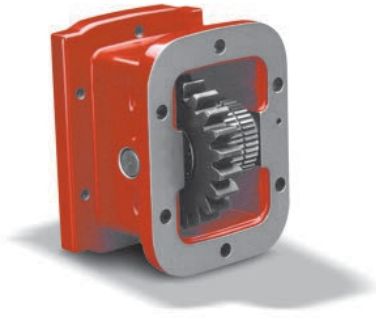


912 Series

- Three 8-Bolt openings available
- Wide variety of 6-Bolt, 8-Bolt, PowerShift, and Reversible PTOs fit the 912 Series
- Air and lever shift available

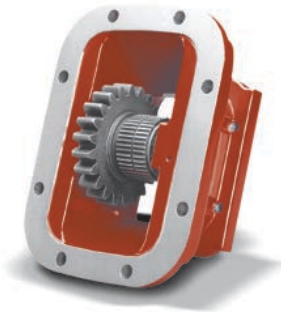
Specifications Chart	Approximate Weight: 130 lbs. [59 kg]	
	912	
w/ Diesel Engine	Max Thru Torque Capacity lbs-ft [Nm]	
Automatic Transmission	13,000 [17,625]	
Manual Transmission	12,000 [16,270]	
w/ Gas Engine		
Automatic Transmission	16,000 [21,693]	
Manual Transmission	15,000 [20,337]	

PTO Options Chart – Split Shaft PTOs		901	912
Shifting			
A	Air Shift	x	x
Y	Lever Shift	x	x
Input-Output Option			
C	1-3/4" - 10T Spline Input-Output	x	
G	2-3/4" w/ 1710 1/2 Rd. Yoke		x
H	2-3/4" w/ 1810 1/2 Rd. Yoke		x
J	2-3/4" Input-Output w/o Yoke		x
M	2-3/4" w/ 1610 Companion Flange		x
P	SPL-170 Yoke		x
S	SPL-250 Yoke		x
PTO Output Option			
XU	SAE C 2-Bolt Flange, SAE C Shaft (1-1/4" - 14T)	x	
XS	SAE C 4-Bolt Flange, SAE C Shaft (1-1/4" - 14T)	x	
XK	SAE B 2 or 4-Bolt Flange, SAE B Shaft (7/8" - 13T)	x	
XV	1410 Series Companion Flange	x	
XX	8-Bolt Apertures Available		x



626 Series

- 6-Bolt Adapter for a 6-Bolt Transmission Opening
- Moves the PTO straight out from the transmission
- Uses the same input gears as the 442 and 489 Series
- Uses the same mounting hardware and spacers used to mount a 442 Series to a specific application
- Does not change PTO ratio



628 Series

- 6-Bolt Adapter for an 8-Bolt Transmission Opening
- Moves the PTO straight out from the transmission
- Uses the same input gears as the 442 and 489 Series
- Uses the same mounting hardware and spacers used to mount a 489 Series to a specific application
- Does not change PTO ratio



630 Series

- 6-Bolt Adapter for a 6-Bolt Transmission Opening
- Moves the PTO down at a 30° angle, helping to eliminate interference problems
- Uses the same input gears as the 442 and 489 Series
- Does not change PTO ratio



645 Series

- 6-Bolt Adapter for a 6-Bolt Transmission Opening
- Moves the PTO down at a 45° angle, helping to eliminate interference problems
- Uses the same input gears as the 442 and 489 Series
- Does not change PTO ratio

626 Gear Chart

Adapter Input Gear				Mounting Information PTO to Adapter		PTO Gear (Packaged Loose w/Adapter)			
Model No.	Part No.	Helix Angle	No. Teeth	Spacer Designator	Stud Kit	PTO Pitch	Part No.	Helix Angle	No. Teeth
626*AB	5-P-1001	Spur	19	7-A-140	7170-3X	—**AB	5-P-1001	Spur	19
626*AH	5-P-1004	Spur	22	7-A-140	7170-3X	—**AH	5-P-1004	Spur	22
626*AR	5-P-1008	Left Hand	21	7-A-187	7170-3X	—**GY	5-P-1184	Right Hand	21
626*BG	5-P-1015	Left Hand	23	7-A-140	7170-3X	—**HB	5-P-1187	Right Hand	23
626*BQ	5-P-1023	Left Hand	25	7-A-200	7170-4X	—**BP	5-P-1022	Right Hand	26
626*DA	5-P-1037	Spur	23	—	—	—**DA	5-P-1037	Spur	23
626*DU	5-P-1050	Left Hand	28	7-A-240	7170-4X	—**HH	5-P-1193	Right Hand	28
626*ES	5-P-1059	Left Hand	22	7-A-062	—	—**HL	5-P-1196	Right Hand	22
626*EV	5-P-1060	Spur	40	7-A-300	7170-4X	—**EV	5-P-1190	Right Hand	40
626*EW	5-P-1061	Left Hand	20	7-A-125	7170-3X	—**HM	5-P-1197	Right Hand	20
626*FN	5-P-1070	Left Hand	26	7-A-300	7170-4X	—**HR	5-P-1201	Right Hand	26
626*HY	5-P-1237	Left Hand	26	7-A-125	328170-94X	—**JB	5-P-1244	Right Hand	26
626*IT	KIT ADAPTER	—	—	—	—	—	—	—	—
626*JK	5-P-1261	Left Hand	24	7-A-187	7170-3X	—**JL	5-P-1262	Right Hand	24
626*JU	5-P-1316	Left Hand	25	7-A-200	7170-4X	—**KA	5-P-1318	Right Hand	25
626*JW	5-P-1319	Left Hand	23	7-A-093	7170-3X	—**KB	5-P-1321	Right Hand	23

628 Gear Chart

Adapter Input Gear				Mounting Information PTO to Adapter		PTO Gear (Packaged Loose w/Adapter)			
Model No.	Part No.	Helix Angle	No. Teeth	Spacer Designator	Stud Kit	PTO Pitch	Part No.	Helix Angle	No. Teeth
628*AB	5-P-1001	Spur	19	7-A-140	7170-3X	—**AB	5-P-1001	Spur	19
628*AH	5-P-1004	Spur	22	7-A-165	7170-3X	—**AH	5-P-1004	Spur	22
628*AR	5-P-1008	Left Hand	21	7-A-200	7170-3X	—**GY	5-P-1184	Right Hand	21
628*BG	5-P-1015	Left Hand	23	7-A-165	7170-3X	—**HB	5-P-1187	Right Hand	23
628*DA	5-P-1037	Spur	23	—	328170-76X	—**DA	5-P-1037	Spur	23
628*DU	5-P-1050	Left Hand	28	7-A-270	7170-5X	—**HH	5-P-1193	Right Hand	28
628*EV	5-P-1060	Spur	40	7-A-300	7170-5X	—**EV	5-P-1060	Spur	40
628*IT	KIT ADAPTER	—	—	—	—	—	—	—	—

630 Gear Chart

Adapter Input Gear				Mounting Information PTO to Adapter		PTO Gear (Packaged Loose w/Adapter)			
Model No.	Part No.	Helix Angle	No. Teeth	Spacer Designator	Stud Kit	PTO Pitch	Part No.	Helix Angle	No. Teeth
630*AB	5-P-1001	Spur	19	7-A-140	7170-3X	—**AB	5-P-1001	Spur	19
630*AH	5-P-1004	Spur	22	7-A-140	7170-3X	—**AH	5-P-1004	Spur	22
630*AR	5-P-1008	Left Hand	21	7-A-187	7170-3X	—**GY	5-P-1184	Right Hand	21
630*BG	5-P-1015	Left Hand	23	7-A-140	7170-3X	—**HB	5-P-1187	Right Hand	23
630*BQ	5-P-1023	Left Hand	25	7-A-200	7170-4X	—**BP	5-P-1022	Right Hand	26
630*DA	5-P-1037	Spur	23	—	—	—**DA	5-P-1037	Spur	23
630*DU	5-P-1050	Left Hand	28	7-A-240	7170-4X	—**HH	5-P-1193	Right Hand	28
630*ES	5-P-1059	Left Hand	22	7-A-062	—	—**HL	5-P-1196	Right Hand	22
630*EV	5-P-1060	Spur	40	7-A-300	7170-4X	—**EV	5-P-1060	Spur	40
630*EW	5-P-1061	Left Hand	20	7-A-125	7170-3X	—**HM	5-P-1197	Right Hand	20
630*FN	5-P-1070	Left Hand	26	7-A-300	7170-4X	—**HR	5-P-1201	Right Hand	26
630*HY	5-P-1237	Left Hand	26	7-A-125	7170-1X	—**JB	5-P-1244	Right Hand	26
630*IT	KIT ADAPTER	—	—	—	—	—	—	—	—
630*JK	5-P-1261	Left Hand	24	7-A-187	7170-3X	—**JL	5-P-1262	Right Hand	24
630*JU	5-P-1316	Left Hand	25	7-A-200	7170-4X	—**KA	5-P-1318	Right Hand	25
630*JW	5-P-1319	Left Hand	23	7-A-093	7170-3X	—**KB	5-P-1321	Right Hand	23

645 Gear Chart

Adapter Input Gear				Mounting Information PTO to Adapter		PTO Gear (Packaged Loose w/Adapter)			
Model No.	Part No.	Helix Angle	No. Teeth	Spacer Designator	Stud Kit	PTO Pitch	Part No.	Helix Angle	No. Teeth
645*AB	5-P-1001	Spur	19	7-A-140	7170-3X	—**AB	5-P-1001	Spur	19
645*AH	5-P-1004	Spur	22	7-A-140	7170-3X	—**AH	5-P-1004	Spur	22
645*AR	5-P-1008	Left Hand	21	7-A-187	7170-3X	—**GY	5-P-1184	Right Hand	21
645*BQ	5-P-1023	Left Hand	25	7-A-200	7170-4X	—**BP	5-P-1022	Right Hand	26
645*DA	5-P-1037	Spur	23	—	—	—**DA	5-P-1037	Spur	23
645*DU	5-P-1050	Left Hand	28	7-A-240	7170-4X	—**HH	5-P-1193	Right Hand	28
645*ES	5-P-1059	Left Hand	22	7-A-062	—	—**HL	5-P-1196	Right Hand	22
645*EV	5-P-1060	Spur	40	7-A-300	7170-4X	—**EV	5-P-1060	Spur	40
645*EW	5-P-1061	Left Hand	20	7-A-125	7170-3X	—**HM	5-P-1197	Right Hand	20
645*FN	5-P-1070	Left Hand	26	7-A-300	7170-4X	—**HR	5-P-1201	Right Hand	26
645*HY	5-P-1237	Left Hand	26	7-A-125	328170-94X	—**HY	5-P-1244	Right Hand	26
645*HV	5-p-1300	Spur	24	7-A-140	328170-94X	—**HV	5-P-1300	Spur	24
645*IT	KIT ADAPTER	—	—	—	—	—	—	—	—
645*JK	5-P-1261	Left Hand	24	7-A-187	7170-3X	—**JL	5-P-1262	Right Hand	24
645*JU	5-P-1316	Left Hand	25	7-A-200	7170-4X	—**KA	5-P-1318	Right Hand	25
645*JW	5-P-1319	Left Hand	23	7-A-093	7170-3X	—**KB	5-P-1321	Right Hand	23