



JEEP JK FRONT 4" TRACK ROD BRACKET

Thank you for choosing Rough Country for your suspension needs.

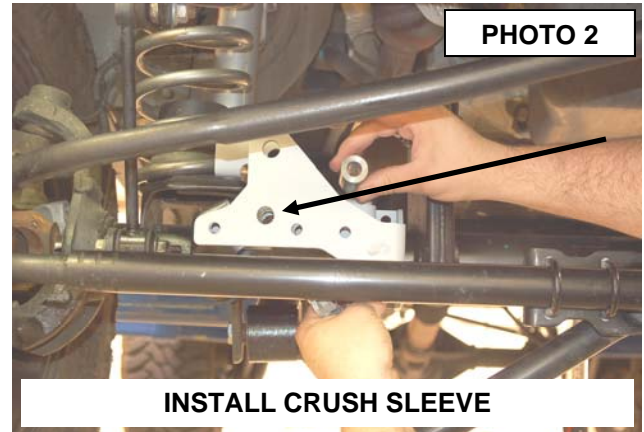
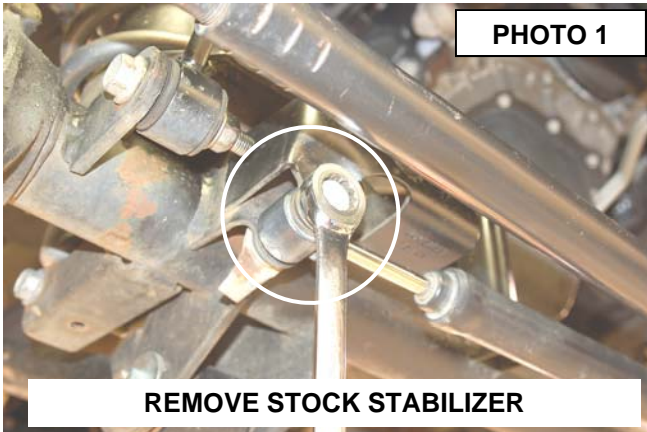
Please read instructions before beginning installation. Check the kit hardware against the parts list. Be sure you have all needed parts and know where they go. Also please review tools needed list and make sure you have needed tools.

NOTICE TO DEALER AND VEHICLE OWNER

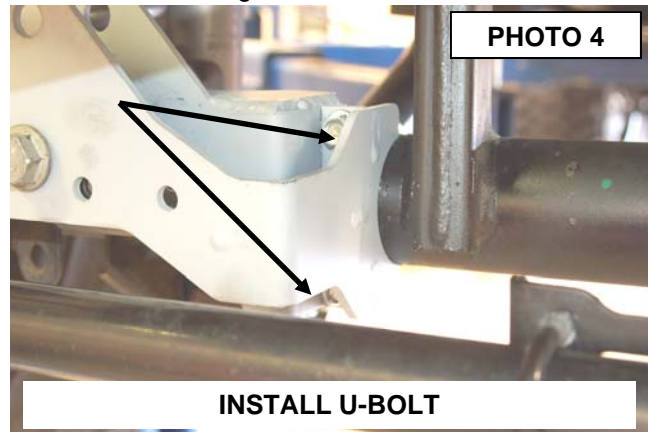
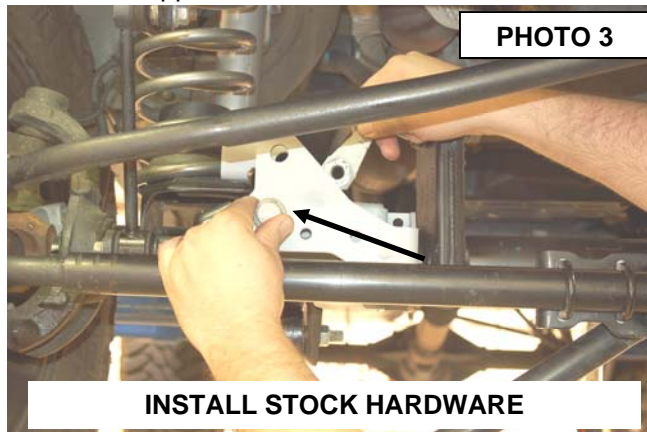
Any vehicle equipped with any Rough Country product should have a "Warning to Driver" decal installed on the inside of the windshield or on the vehicle's dash. The decal should act as a constant reminder for whoever is operating the vehicle of its unique handling characteristics.

Installation Instructions

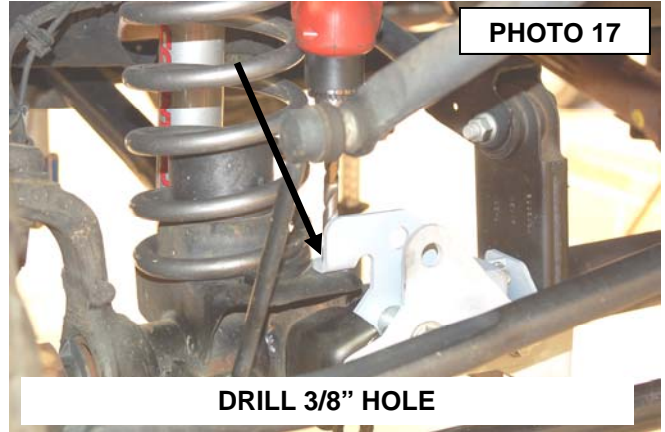
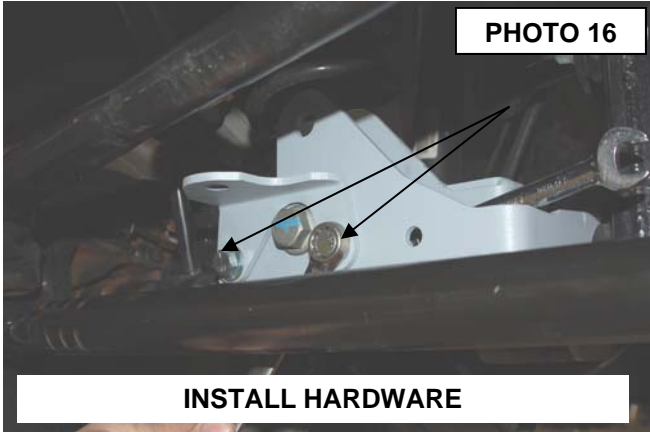
1. Remove the stock stabilizer and bracket from the axle mount using a 18mm wrench **See Photo 1.**
2. Install the track rod bracket as shown on the stock mount. **See Photo 2.**



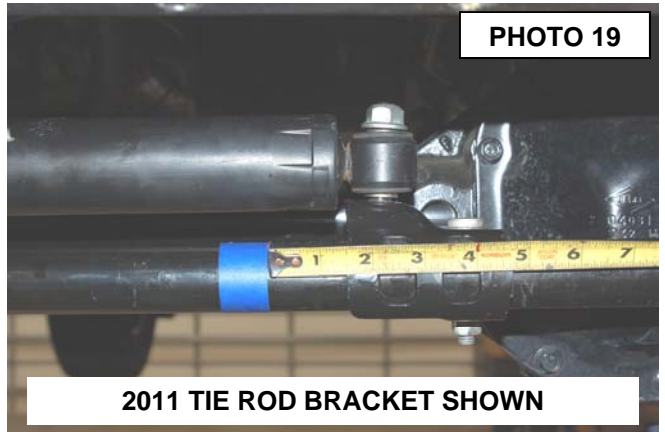
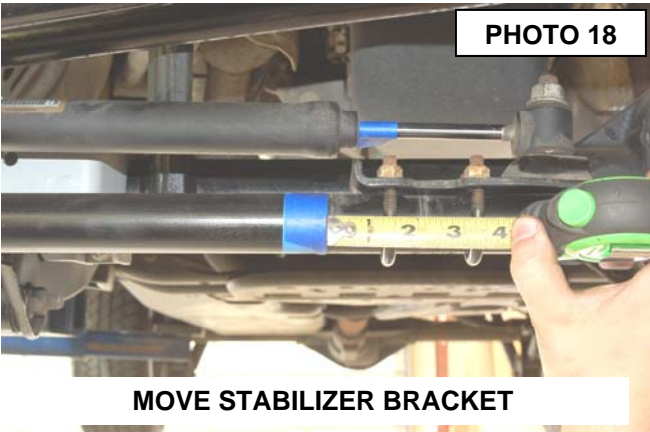
3. Install the crush sleeve with the stock hardware as shown in **Photo 3.** Do not tighten at this time.
4. Install the supplied u-bolt and nuts in the bracket as shown in **Photo 4.** Do not tighten at this time.



24. Install the two 3/8" x 1 1/4" bolts, washer and nuts in the new bracket and supplied stabilizer bracket if reusing the stock stabilizer in the far left holes as shown. If not installing the stock stabilizer, the two 3/8" x 1 1/4" bolts will be installed in the two far left holes in the bracket with out the supplied stabilizer bracket. **See Photo 16.**
25. Drill the rear mount using a 3/8" drill bit and install the 3/8" x 1 1/4" bolt, washer and flange lock nut. **See Photo 17.**



26. Tighten all 3/8" hardware using a 9/16" wrench.
27. **This next two steps will be performed if the stock stabilizer is retained.** On 07-10 Models mark the location on the factory tie rod bracket on the tie rod and loosen the u-bolt nuts using a 13mm wrench. Slide the bracket down 1 1/4" rotate to position the stud up as shown and retighten tie rod end bracket. **See Photo 18.**
28. On 2011 models loosen the tie rod bracket using a 15mm wrench. Mark original location and move the bracket 1 1/2" and rotate the tie rod bracket as shown to allow full stroke of the stabilizer cylinder. **See Photo 19.**



29. Install the factory stabilizer in the new track rod / stabilizer mount with the body of the stabilizer on the axle mount with stock hardware and tighten using a 18mm socket / wrench. **See Photo 20.**
30. Install the stock track bar into the new track rod bracket using the supplied 14mm x 80mm bolt, washer and lock nut. Tighten using a 21mm & 22 mm socket / wrench. **See Photo 20**



POST INSTALLATION

1. Re-torque all fasteners after 500 miles and recheck after 1000 miles. Alignment must be checked by a qualified mechanic. Visually inspect components and re-torque fasteners during routine vehicle service.